



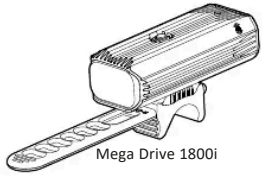
Scan to see features and videos



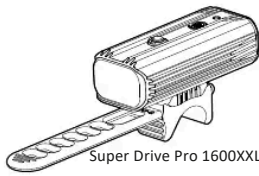
Download **Lezyne LED Ally** to pair lights & customize modes

English User Manual

READ ENTIRE MANUAL BEFORE OPERATION to ensure proper use and care of your new Lezyne LED light. Traffic laws mandating lighting vary from country to country. Inform yourself about lighting laws and regulations in the country of use. Lezyne LED lights do not conform to the German road traffic regulation StVZO.



Mega Drive 1800i



Super Drive Pro 1600XXL

Warnings

DO NOT LOOK DIRECTLY INTO LIGHT BEAM or shine into eyes of another.

Lezyne LED Lights have a water resistance rating of IPX7 under IEC standard 60529. Submerging the device is not recommended. If moisture does enter the casing, air out until completely dry.

DO NOT ATTEMPT TO REMOVE ELECTRONICS. Doing so will void warranty.

Lezyne USA, Inc. does not accept any liability for injuries or other damages resulting from the use of this product in any circumstances.

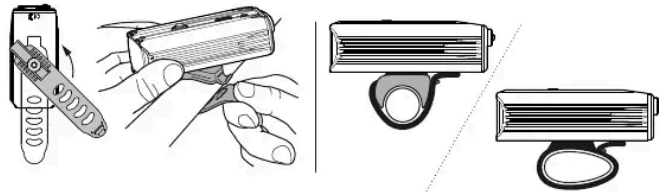
Warranty

In U.S. and U.K., Lezyne LED Lights carry a two (2) year warranty from the original purchase date to the original owner (proof of purchase required). Lezyne Batteries carry a six (6) month warranty from the original purchase date. Lezyne warranties cover any manufacturing defects in materials or workmanship. Issues not covered by warranty include normal wear & tear, improper installation, attempting to access or modify electronics, damage or failure due to accident, misuse, abuse and/or neglect.

For all warranty issues worldwide, please contact the retailer that sold the product.

For any warranty questions contact: warranty@lezyne.com

Mounting / Montaje



Operation

1. On/Off: hold button two (2) sec.
2. Mode cycle: click button

RACE MODE: With the light OFF, hold button for five (5) seconds, until light flashes. The light is now in Race Mode where only Overdrive and Economy outputs are selectable. The light will remain in Overdrive Race Mode even when switched OFF. Repeat the step above to return to the normal mode set.

MODE MEMORY: The light remains in the output setting it is switched OFF in.

THERMAL PROTECTION: If the operating temperature of the light is too high, the light automatically lowers the lumen output.

Run Times and Modes

MEGA DRIVE 1800i

BLAST	ECONOMY	FEWTO	DAY FLASH	FLASH 1	FLASH 2	PULSE	OVERDRIVE
1000 LUMENS	600 LUMENS	250 LUMENS	15 LUMENS	600 LUMENS	150 LUMENS	150 LUMENS	1800 LUMENS
2:30 h : min	3:45 h : min	10:00 h : min	148:00 h : min	21:00 h : min	33:00 h : min	36:00 h : min	38:00 h : min
1:40 h : min							

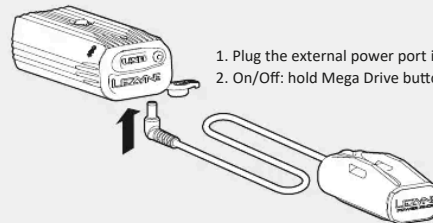
SUPER DRIVE 1600XXL

BLAST	ECONOMY	FEWTO	DAY FLASH	FLASH 1	FLASH 2	PULSE	OVERDRIVE
1000 LUMENS	600 LUMENS	250 LUMENS	15 LUMENS	600 LUMENS	150 LUMENS	150 LUMENS	1600 LUMENS
2:30 h : min	3:45 h : min	10:00 h : min	148:00 h : min	20:10 h : min	33:00 h : min	36:00 h : min	38:00 h : min
1:45 h : min							

Packaging include

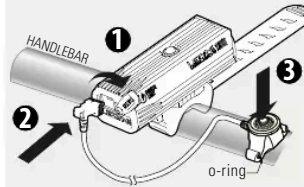
	MOUNTING STRAP	USB CABLE	KTV PRO SMART REAR	HANDLE BAR MOUNT	POWER PACK	REMOTE SWITCH
MEGA DRIVE 1800i	●	●				
MEGA DRIVE 1800i LOADED PRO	●	●	●	● (AL)	●	●
SUPER DRIVE 1600XXL	●	●				
SUPER DRIVE 1600XXL LOADED	●	●	●	● (CM)		

Power Pack Operation (Mega Drive 1800i loaded ONLY)



1. Plug the external power port into LED power plug.
2. On/Off: hold Mega Drive button two (2) sec.

Remote Switch (Mega Drive 1800i loaded ONLY)



The rubber pad must be in contact with handlebar, mount Lezyne Remote Switch with an o-ring.

Plug the cable into the LED light external charge port, now Remote Switch button is able to function the same as LED light button.

KTV Pro Smart Rear Instruction (Mega / Super loaded ONLY)

BATTERY



100-75% 75-25% 2-50%

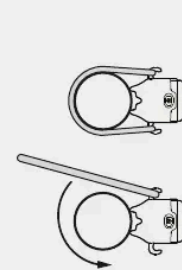
CHARGING



charging charged 3hr USB charge

on/off: hold 2 sec

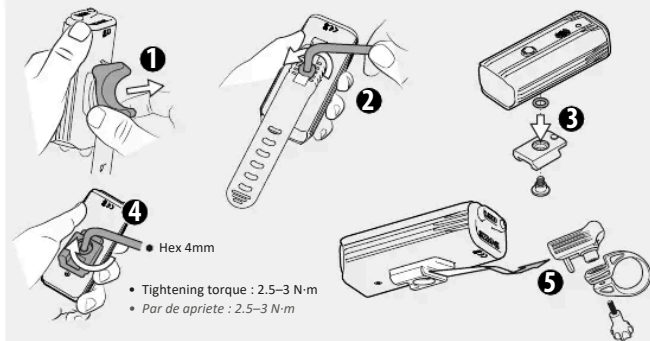
MOUNTING



RUN TIMES AND MODE

	BLAST	ECONOMY	DAY FLASH	FLASH 1	FLASH 2
	20 LUMENS	3 LUMENS	75 LUMENS	25 LUMENS	10 LUMENS
	4:00 h : min	18:00 h : min	10:00 h : min	8:45 h : min	19:30 h : min

Handlebar mount Instruction (Mega / Super loaded ONLY)



- Tightening torque : 2.5-3 N·m
- Par de apriete : 2.5-3 N·m

Battery Indicator

An LED, located in the button, displays current battery status while light is ON. When light is OFF, click button once to momentarily display battery status.

100% 50% 10% 5%



Illuminates green Illuminates yellow Illuminates red Flashes red

Charging

Before using your Lezyne LED Light for the first time, fully charge the battery. To charge your light:

1. Switch light OFF
2. Remove USB protective cover
3. Connect micro USB cable and light to powered USB port
4. Once charging, button will flash green; if USB port is capable, light will use High Efficiency (HE) charging and button will flash blue

If button does not flash when plugged in, selected USB port may not be powered—try another USB port.

Light will be charged green or blue.

5. Remove light from installed for water

Charging Fully



Flashes green or blue

More Information

For more information

POR FAVOR, LEA TOD el cuidado de su nueva de un país a otro. Inf con las regulaciones

Advertencias

NO MIRE DIRECTAMEN Las luces LED de Lezy el estándar IEC 6052 que la humedad entr

NO INTENTE RETIRAR

Lezyne USA, Inc. no a resulten del uso de este produ

Garantía

En los EE. UU. y el RE la fecha de compra p compra). Las baterías original. Las garantías mano de obra. Estas intento de acceso o n un accidente, uso ind

Para cuestiones de ga Si tiene cualquier du

Si tiene cualquier du

Si tiene cualquier du

Si tiene cualquier du

Si tiene cualquier du

Si tiene cualquier du

Si tiene cualquier du

Si tiene cualquier du

Si tiene cualquier du

Si tiene cualquier du

Si tiene cualquier du

Si tiene cualquier du

Si tiene cualquier du

Si tiene cualquier du

Si tiene cualquier du

Si tiene cualquier du

Si tiene cualquier du

Si tiene cualquier du

Si tiene cualquier du

Si tiene cualquier du

Si tiene cualquier du

Si tiene cualquier du

Si tiene cualquier du

Si tiene cualquier du

Si tiene cualquier du

Si tiene cualquier du

Si tiene cualquier du

Si tiene cualquier du

